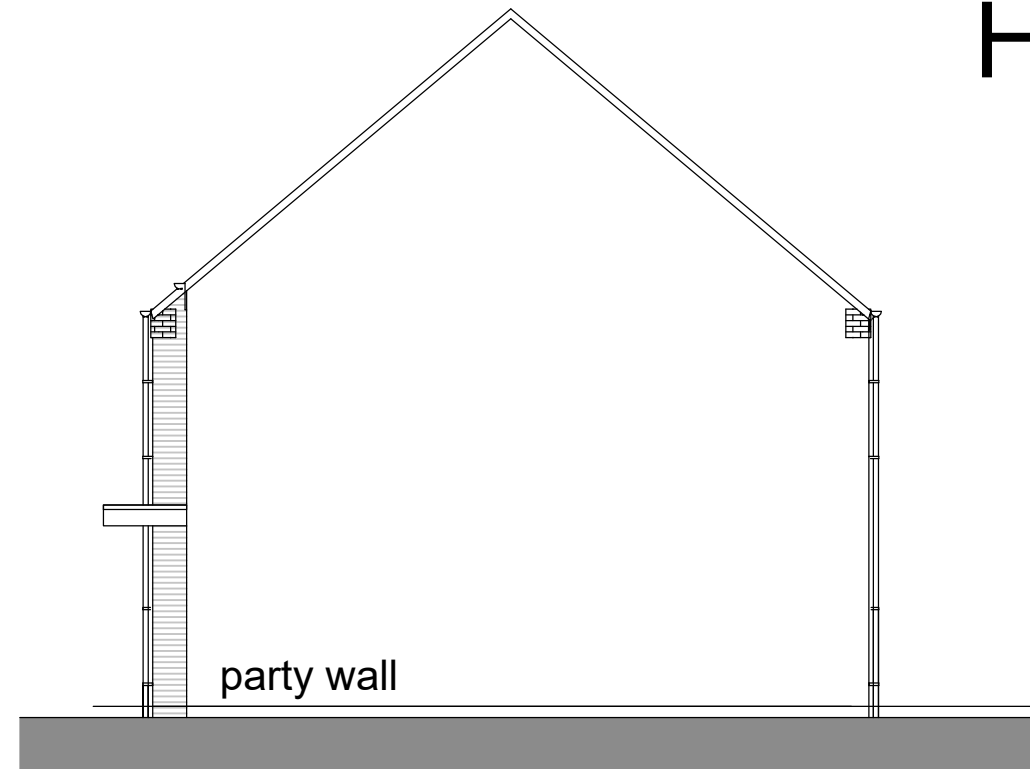


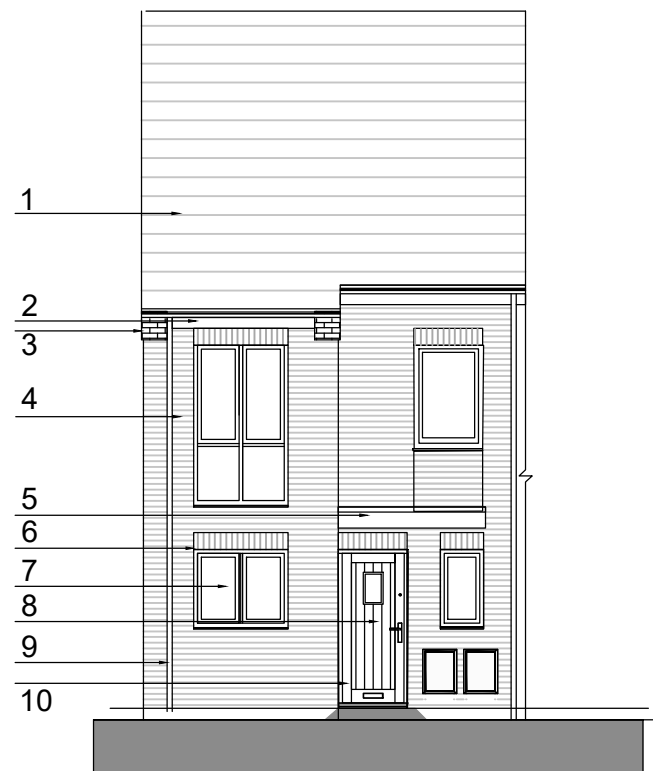
# HOUSE TYPE 2a



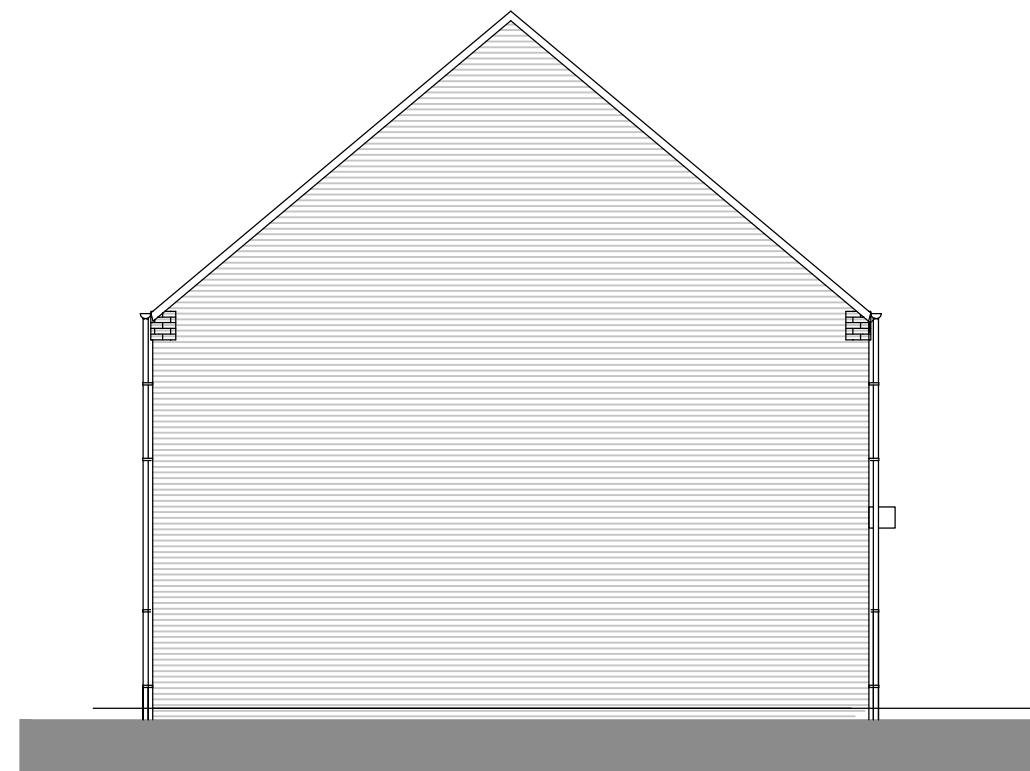
REAR ELEVATION



party wall



FRONT ELEVATION



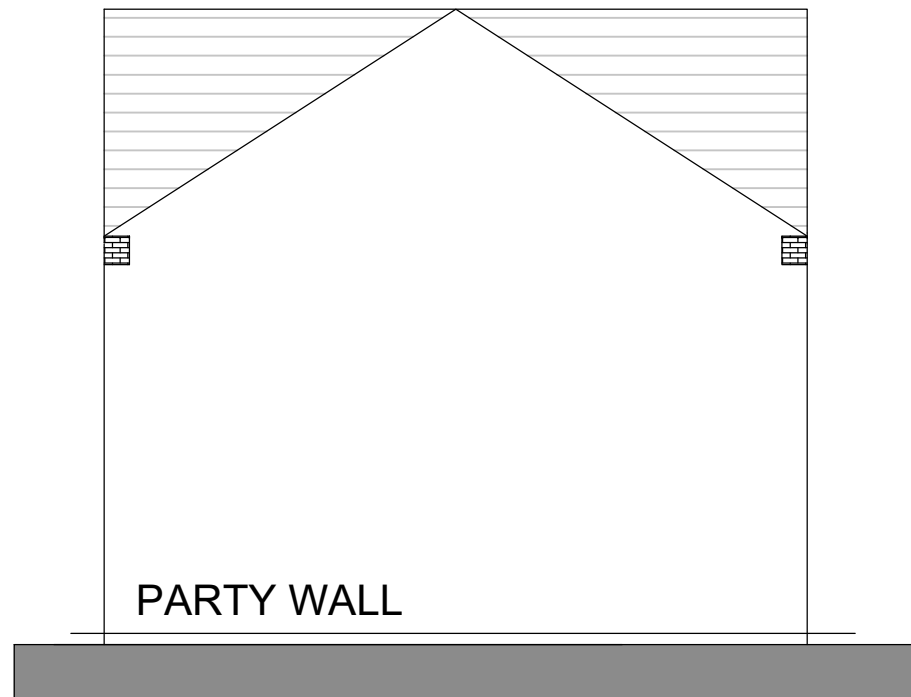
SIDE ELEVATION

## EXTERNAL MATERIALS

- 1 **ROOF TILES** - CONCRETE INTERLOCKING TILES IN RED OR BROWN COLOUR
- 2 **SOFFIT & FASCIAS** -WHITE
- 3 **CORBELLED EAVES**
- 4 **FACING BRICKWORK**- refer to materials plan
- 5 **CANOPY**- GRP WITH WHITE FASCIA
- 6 **WINDOW HEADERS** - RED FACING BRICK
- 7 **WINDOWS** - WHITE UPVC
- 8 **FRONT DOORS**- refer to materials plan
- 9 **RAINWATER GOODS**- BLACK UPVC
- 10 **ELECTRIC METER** - BLACK

rev	date	revision	by	by

# HOUSE TYPE 2b



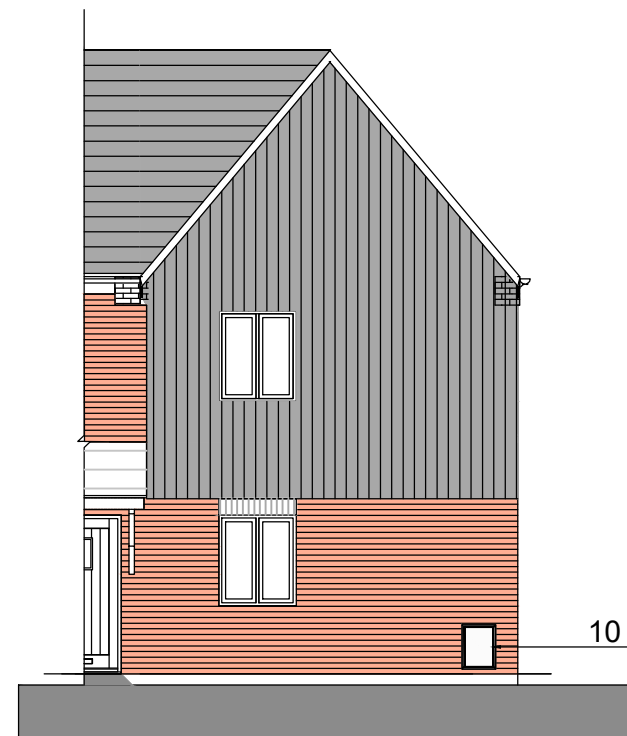
PARTY WALL



SIDE ELEVATION



FRONT ELEVATION



## EXTERNAL MATERIALS

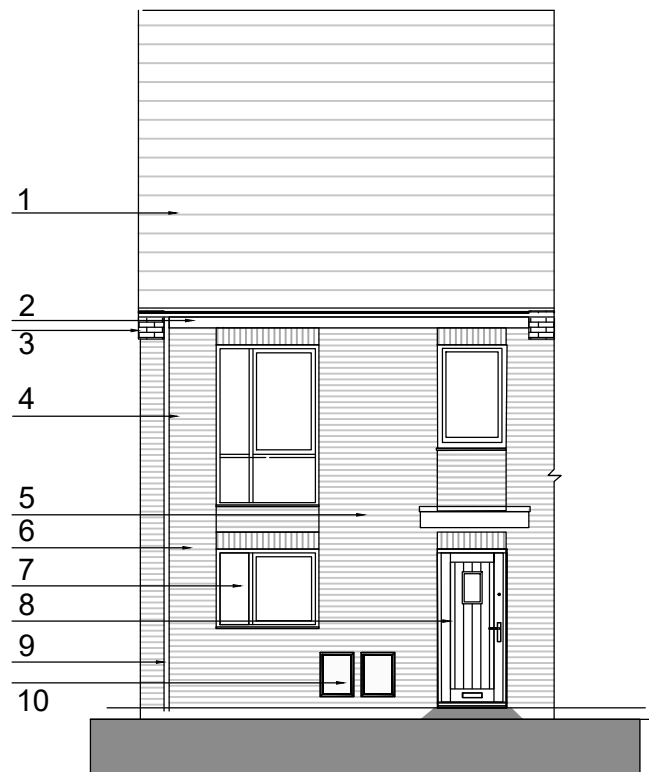
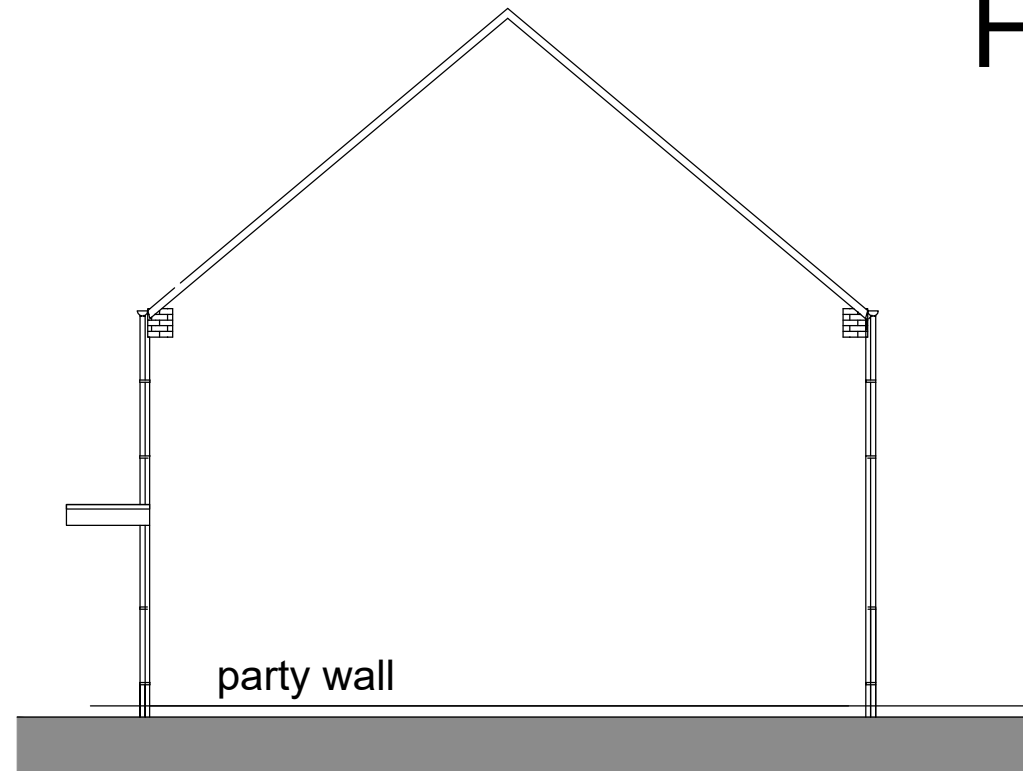
- 1 **ROOF TILES** - CONCRETE INTERLOCKING TILES IN RED OR BROWN COLOUR
- 2 **SOFFIT & FASCIAS** -WHITE
- 3 **CORBELLED EAVES**
- 4 **FACING BRICKWORK**- refer to materials plan
- 4A **CLADDING** - gray hardi plank refer to materials plan
- 5 **CANOPY**- GRP WITH WHITE FASCIA
- 6 **WINDOW HEADERS** - RED FACING BRICK
- 7 **WINDOWS** - WHITE UPVC
- 8 **FRONT DOORS**- refer to materials plan
- 9 **RAINWATER GOODS**- BLACK UPVC
- 10 **ELECTRIC METER** - BLACK

rev	date	revision	by	by

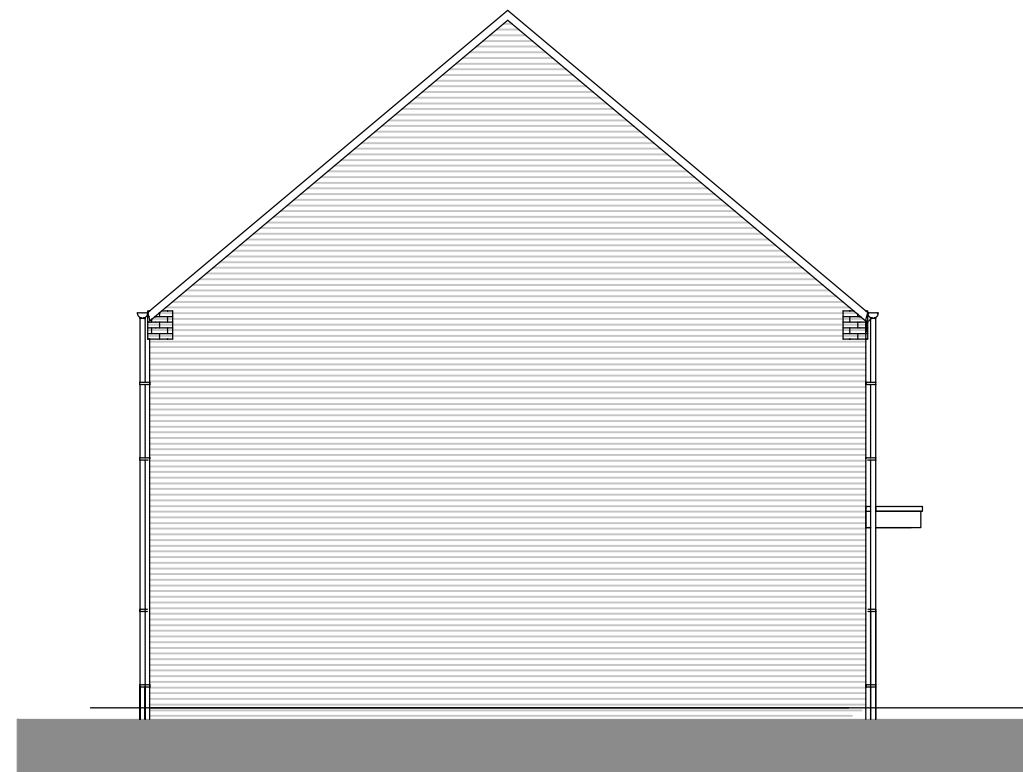
# HOUSE TYPE 3



REAR ELEVATION



FRONT ELEVATION



SIDE ELEVATION

## EXTERNAL MATERIALS

- 1 **ROOF TILES** - CONCRETE INTERLOCKING TILES IN RED OR BROWN COLOUR
- 2 **SOFFIT & FASCIAS** -WHITE
- 3 **CORBELLED EAVES**
- 4 **FACING BRICKWORK**- refer to materials plan
- 5 **CANOPY**- GRP WITH WHITE FASCIA
- 6 **WINDOW HEADERS** - RED FACING BRICK
- 7 **WINDOWS** - WHITE UPVC
- 8 **FRONT DOORS**- refer to materials plan
- 9 **RAINWATER GOODS**- BLACK UPVC
- 10 **ELECTRIC METER** - BLACK

rev	date	revision	by	by

# FLAT TYPE 1a



REAR ELEVATION



SIDE ELEVATION (LH)

## EXTERNAL MATERIALS

- |  |   |
|--|---|
| <p>1 <b>ROOF</b> - standing seam aluminum roof in light grey colour</p> <p>2 <b>SOFFIT &amp; FASCIAS</b> -ppc aluminium light grey with concealed gutter</p> <p>3 <b>CLADDING</b>- grey hardi plank or similar</p> <p>4 <b>FACING BRICKWORK</b>- refer to materials plan</p> <p>5 <b>CANOPY</b>- flat glass canopy</p> | <p>6 <b>FEATURE WALL</b> - cream render</p> <p>7 <b>WINDOWS AND DOORS</b> - dark grey upvc</p> <p>8 <b>BALCONY</b> - dark grey metal railings</p> <p>9 <b>RAINWATER GOODS</b>- black upvc</p> |
|--|---|



FRONT ELEVATION



SIDE ELEVATION (RH)

rev	date	revision	by	by