

Aberlady -

V23-61-2MT
V23-61-2ET

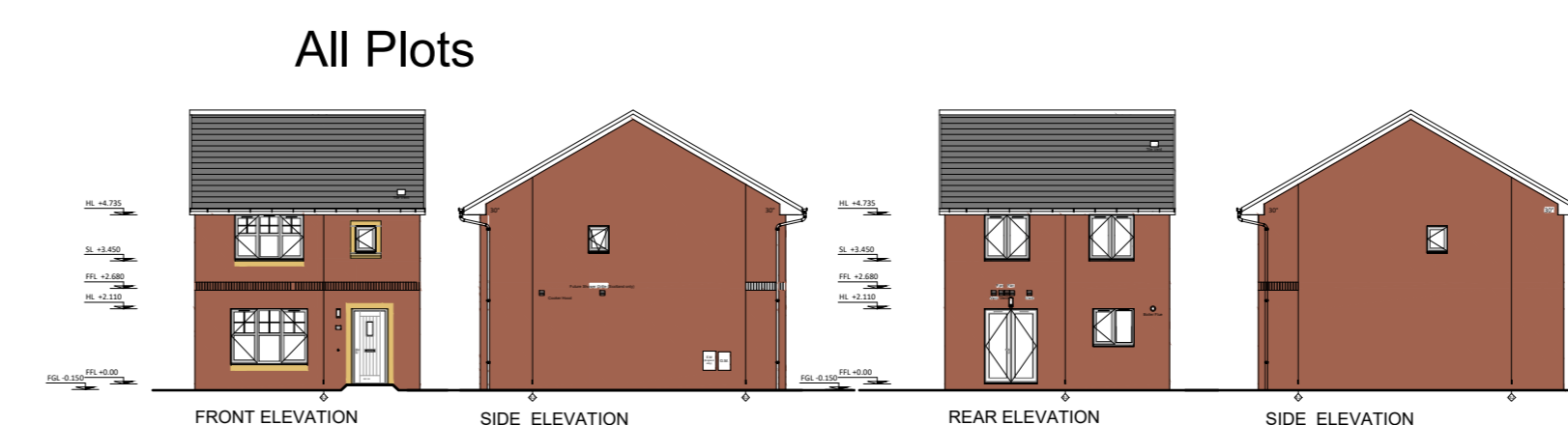


*Refer to Materials Layout
for Elevation Treatments

Style v2 Dwg No: V23-61-2MT-420
V23-61-2ET-420

Castleford -

V23-90-3D



*Refer to Materials Layout
for Elevation Treatments

Style v2 Dwg No: V23-90-3D-420

Alnwick -

V23-66-2MT



*Refer to Materials Layout
for Elevation Treatments

Style v2 Dwg No: V23-66-2MT-420

Corringham -

V23-95-3D



*Refer to Materials Layout
for Elevation Treatments

Style v2 Dwg No: V23-96-3D-423

Aviemore -

V23-72AV-3MT
V23-72AV-3ET

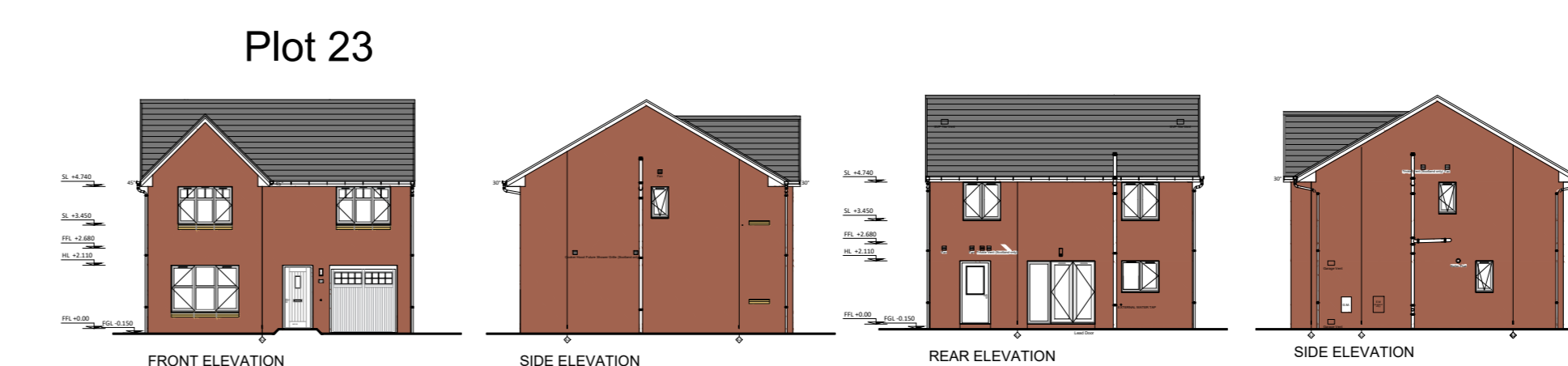


*Refer to Materials Layout
for Elevation Treatments

Style v2 Dwg No: V23-72AV-3MT-420
V23-72AV-3ET-420

Farnham -

V23-118-4D

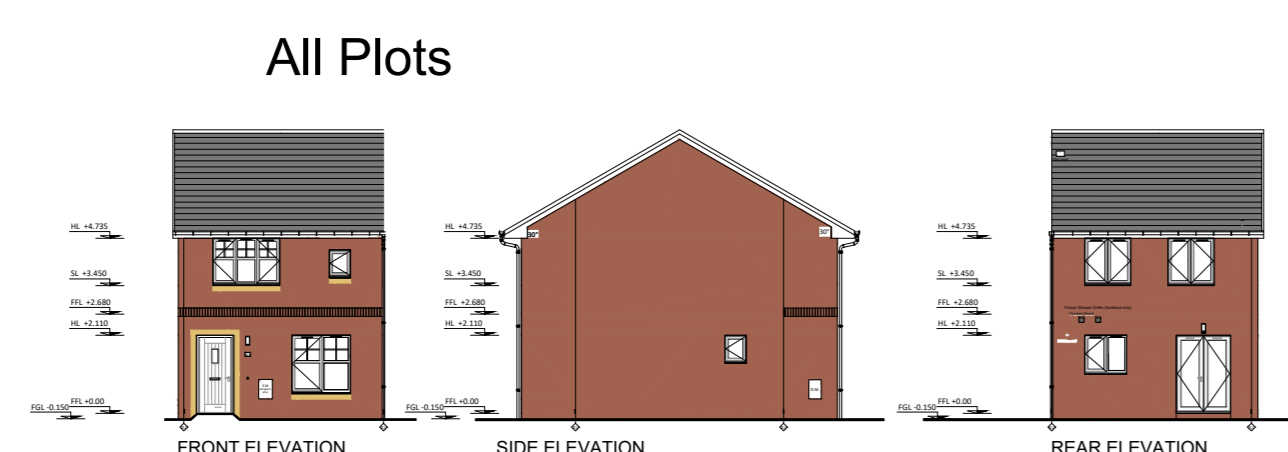


*Refer to Materials Layout
for Elevation Treatments

Style v1 Dwg No: V23-118-4D-400

Berwick -

V23-80-3MT
V23-80-3ET

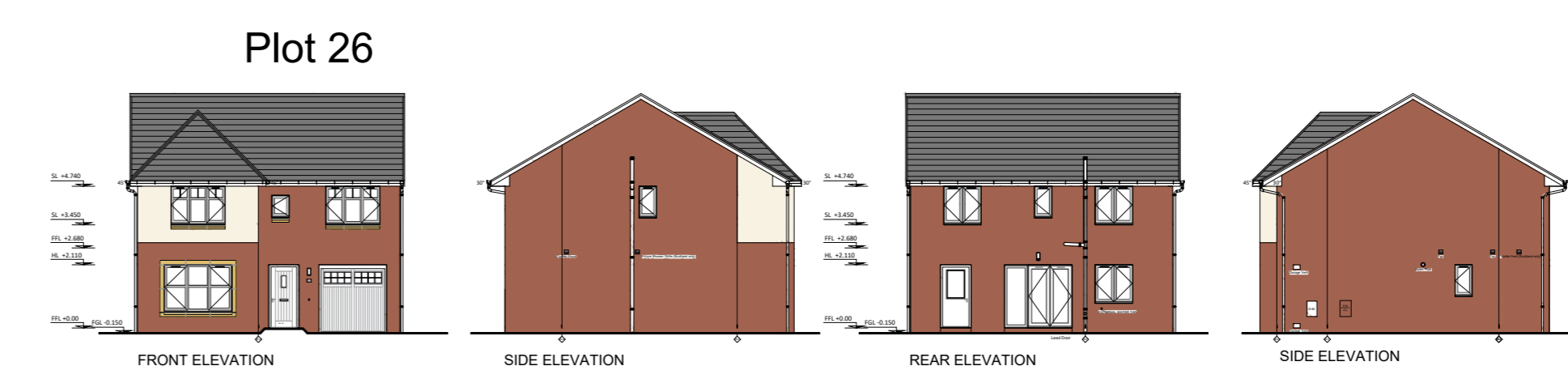


*Refer to Materials Layout
for Elevation Treatments

Style v2 Dwg No: V23-80-3MT-420
V23-80-3ET-420

Harris -

V23-128-4D

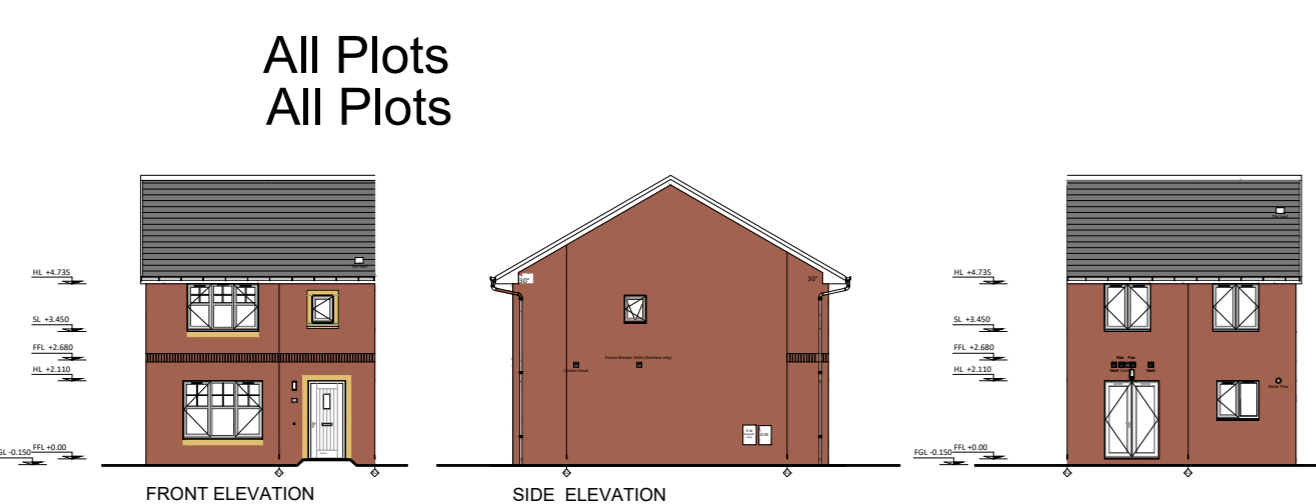


*Refer to Materials Layout
for Elevation Treatments

Style v2 Dwg No: V23-128-4D-421

Cairnhill -

V23-90-3ET/S

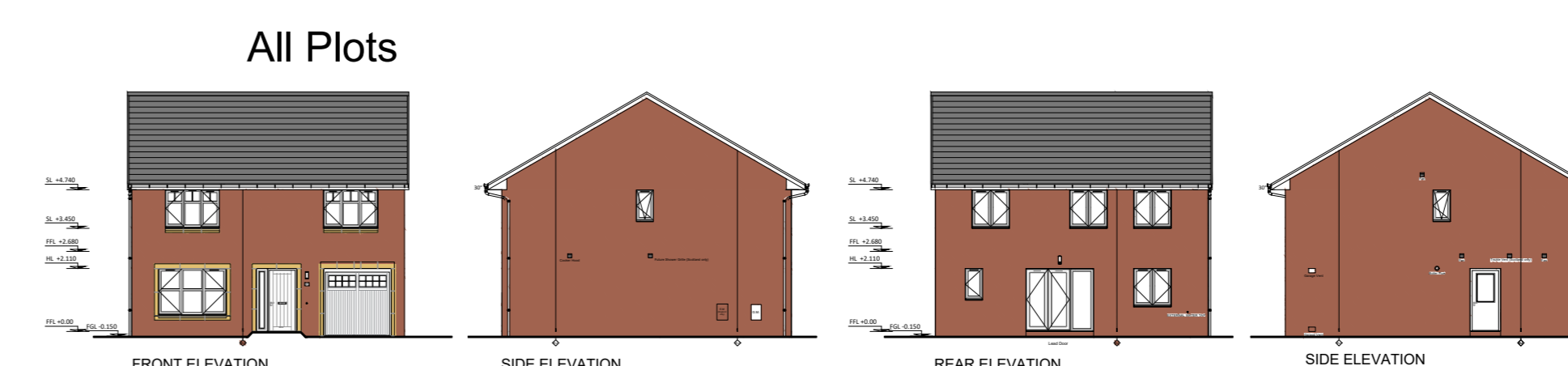


*Refer to Materials Layout
for Elevation Treatments

Style v2 Dwg No: V23-90-3ET/S-420

Kendal -

V23-139-5D



*Refer to Materials Layout
for Elevation Treatments

Style v1 Dwg No: V23-139-5D-400

Culross -

V23-96-3S

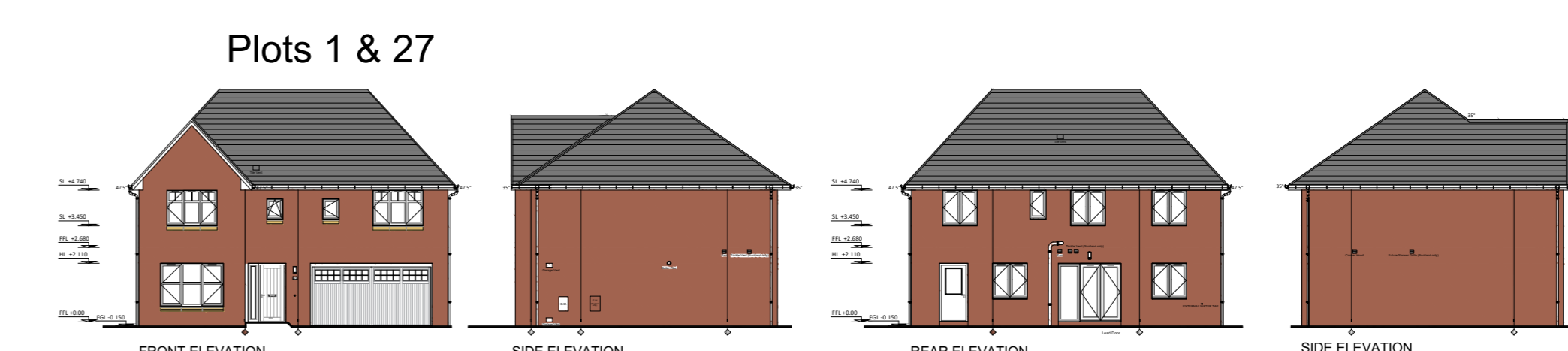


*Refer to Materials Layout
for Elevation Treatments

Style v2 Dwg No: V23-96-3S- 423

Leven -

V23-152-5D

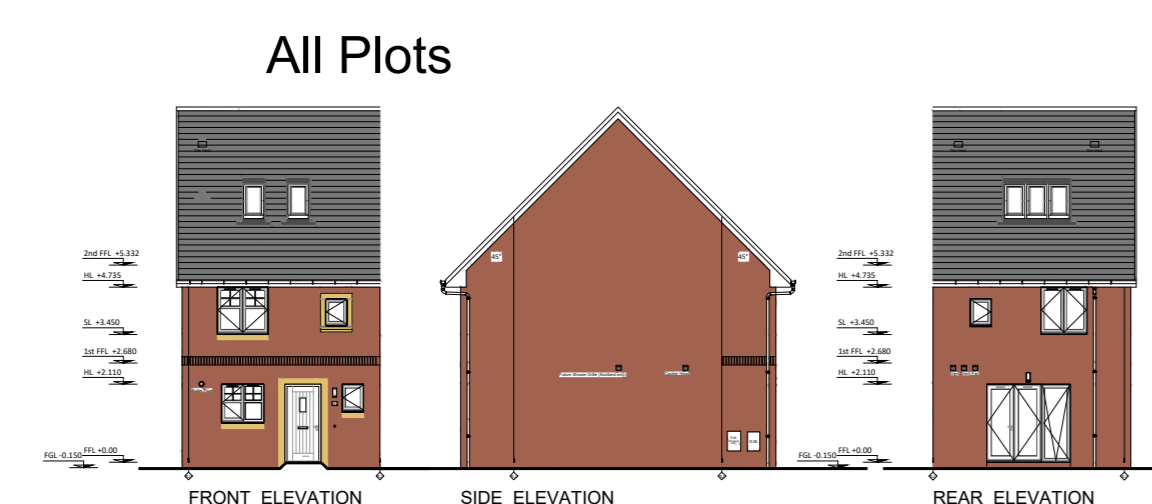


*Refer to Materials Layout
for Elevation Treatments

Style v1 Dwg No: V23-152-5D-4D-400

Darrington -

V23-99-3ET/S

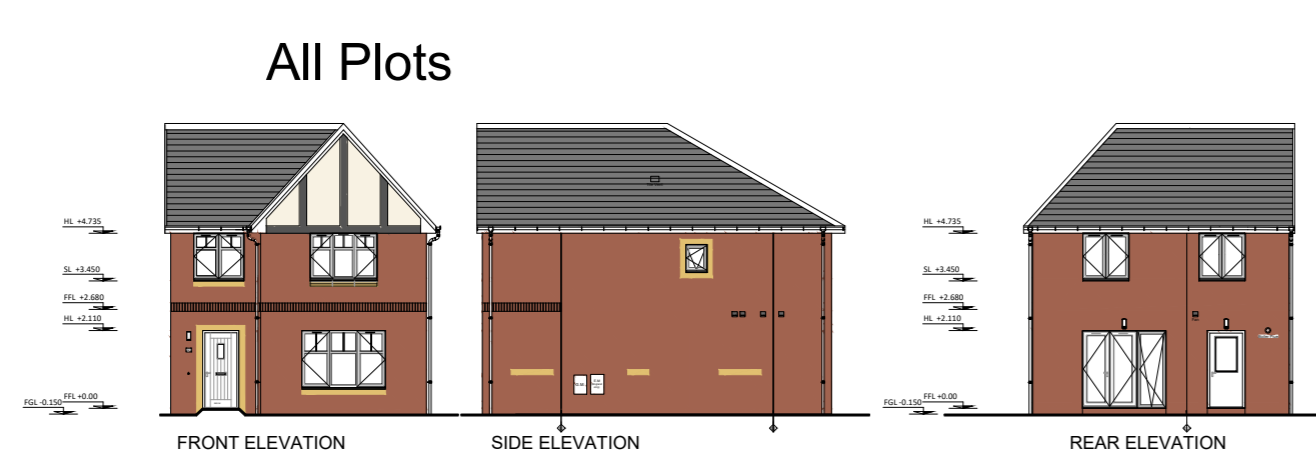


*Refer to Materials Layout
for Elevation Treatments

Style v2 Dwg No: V23-99-3ET/S-420

Dewsbury D -

V23-106-4D



*Refer to Materials Layout
for Elevation Treatments

Style v2 Dwg No: V23-106-4D-424

Rev	Details	Date	By	CHK
DATE		01.04.2021	DRAWN	CMc
SCALE		1:500	CHK	DJM

New Brighton, Mold

Individual Elevations

Dwg No	SK306-HTE-01	Rev	-
--------	--------------	-----	---

STEWART
Milne
HOMES

Stewart Milne Homes
Harrier House
2 Lumsdale Road
Cobra Business Park
Trafford Park Manchester
Telephone (0161) 866 6900
fax (0161) 866 6909