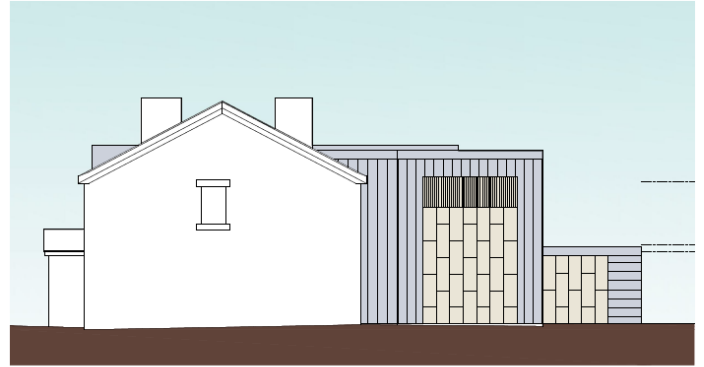




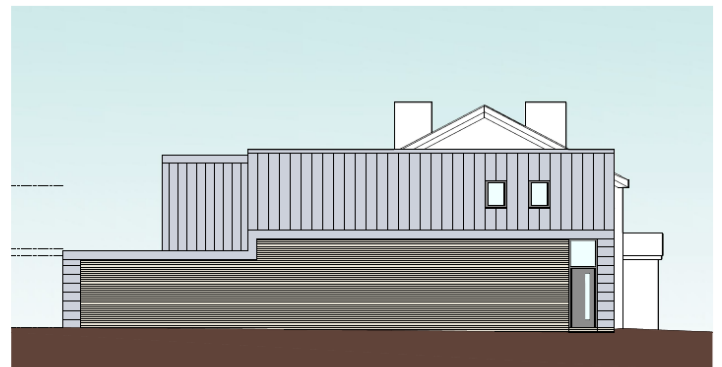
South Elevation As Proposed



East Elevation As Proposed



North Elevation As Proposed



West Elevation As Proposed

CASE STUDY

Extension to existing business in Green Belt

CLIENT:
French Connection (Norden)
Ltd.

SITE:
The Bird ' Th' Hand, Birtle,
Rochdale.

A well-known restaurant operator wanted to secure the future of a local Public House through the creation of a gastro pub. However this would only be viable if the existing premises could be substantially extended. Ambitious plans were drawn up by C J

Partnership which proposed the doubling in size of the premises in this sensitive Green Belt location. Hourigan Connolly were subsequently instructed to justify the proposals in planning terms. By devising various social, economic and

environmental arguments we were able to put forward a strong case for the proposals. Our submissions were accepted by Officers who recommended approval of the scheme and Members subsequently granted planning permission for the proposals.